

2.5cm

2.5cm

18 pt. bold
(18 pt. line spacing)

Leave 2 blank lines exactly at 13pt.

13 pt. bold
(13 pt. line spacing)

Leave 1 blank line exactly at 13pt.

13 pt. italic
(13 pt. line spacing)

e-mail: vagrants@mail.goo.ne.jp

Leave 1 blank line exactly at 13pt.

5-7 lines of 12 pt. italics (Line spacing at 13 pt.) and center justify with 1cm margins.

Word originally in italics

should be in plain font.

12 pt. bold

Leave 1 blank line exactly at 13pt.

12 pt.
(13 pt. line spacing)

Leave 2 blank lines exactly at 13pt.

1.25 cm indent

Type 13 pt. hading in **bold**.
No. space for the following text.

*Type all characters in 13 pt.
'Times New Roman' font with
exactly 13 pt. line spacing.*

SPECIMEN

Leave 1 blank line exactly at 13pt.

At present 3-(4-boronophenyl)alanine (Bpa) (**1**) [4] and 3-(4-boronophenyl)alaninol (Bpa-ol) (**2**) [5] enriched with ^{10}B isotope seem to be good candidates for BNCT as the ^{10}B carrier. In the present study we carried out the synthesis of

3.0cm

*(Write the page number in pencil
at the bottom right-hand corner.)*

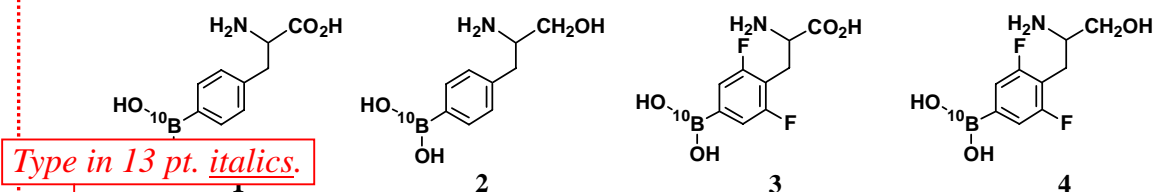
2.5cm

2.5cm

2.5cm

two novel compounds containing both ^{19}F and ^{10}B atoms in a single molecule such as 3-(4-borono-2,6-difluorophenyl)alanine [$\text{Bpa}(\text{F}_2)\text{-}^{10}\text{B}$] (**3**) and 3-(4-borono-2,6-difluorophenyl)alaninol [$\text{Bpa}(\text{F}_2)\text{-}^{10}\text{B-ol}$] (**4**); these compounds may be useful for not only MRI but also BNCT (Fig. 1).

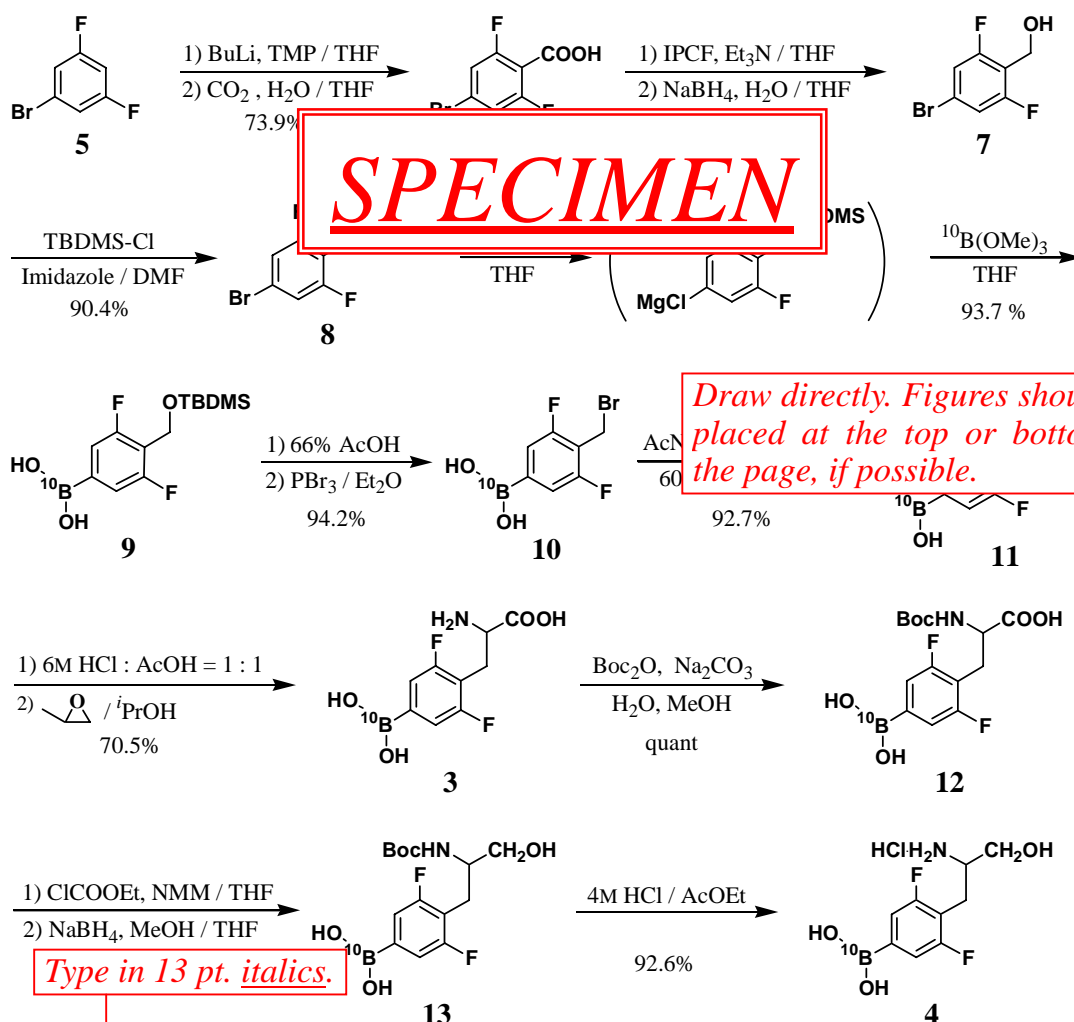
Leave 2 blank lines exactly at 13pt between figure and text.



Leave 1 blank line exactly at 13pt between caption and figure.

Fig. 1. $\text{Bpa-}^{10}\text{B}$ (**1**) and the related compounds **2** ~ **4**.

Leave 2 blank lines exactly at 13pt between figure and text.



Draw directly. Figures should be placed at the top or bottom of the page, if possible.

Leave 1 blank line exactly at 13pt between caption and figure.

Fig. 2. Synthetic scheme of $\text{Bpa}(\text{F}_2)\text{-}^{10}\text{B}$ (**3**) and $\text{Bpa}(\text{F}_2)\text{-}^{10}\text{B-ol}$ (**4**).

Leave 2 blank lines exactly at 13pt between figure and text.

3.0cm

(Write the page number in pencil at the bottom right-hand corner.)

2.5cm

References

1. Kato, I., Ono, K., Sakurai, Y., Ohmae, M., Maruhashi, A., Imahori, Y., Kirihata, M., Nakazawa, M., and Yura, Y. (2004) *Appl. Radiat. Isot.*, **61**, 1083-1087.
2. Barth, R. F., Yang, W., Adams, D. M., Rotaru, J. H., Shukla, S., Sekido, M., Tjarks, W., Fenstermaker, R. A., Ciesielski, M., Nawrocky, M. M., and Coderre, J. A. (2002) *Cancer Res.*, **62**, 3159-3166.
3. Kane, R. R., Drechsel, K., and Hawthorne, M. F. (1993) *J. Am. Chem. Soc.*, **115**, 8853-8854.
4. Nakao, H., Morimoto, T., and Kirihata, M. (1996) *Biosci. Biotech. Biochem.*, **60**, 683-684.
5. Masunaga, S., Ono, K., Kobayashi, T., Nagasaka, Y., Kinashi, Y., *Jpn. J. Cancer Res.*, **92**, 996-1007.

SPECIMEN

References should follow the numerical system starting with reference No. 1, indicated as [1] in the text. The layout style for citing journal and book references should conform with those in the sample above. Citation of articles "in preparation" or "submitted for publication" is not permitted.

All the manuscripts should be 2 or 4 pages.

3.0cm

(Write the page number in pencil
at the bottom right-hand corner.)